



# CRAWFORD & GRAY ARCHITECTS

## PORTFOLIO - COMMERCIAL



Crawford and Gray Architects was founded by Peter Crawford and Michael Gray in 1996. Enrico Galliani, who joined CGA in 2000, is the practice's director and lead architect since 2013. In 2017 Galata studio merged with CGA.

Specialised in high profile projects in central London, under the strict scrutiny of local authorities, landlords and stakeholders, the combined portfolio covers a wide range of projects from purpose built art galleries to commercial developments , from fashion showroom to in-house consultancy for Foreign Delegation headquarters.

Understanding the client's aims and expectations, developing specific designs and offering a solid project management are at the core of Rerum Natura's architectural approach.

Acting as both design and executive architect or working in collaboration with a concept designer and/ or other key design consultants (interior designers, lighting designers, structural and services engineers, ect..), the involvement in each project has been throughout all or some of the RIBA workstages: Preparation and Brief, Concept Design, Developed Design, Technical Design, Construction, Handover and Close Out.

## **Art Galleries**

- Colnaghi Art Gallery
- Dutko Galler
- Kallos Gallery
- Lampronti Art Gallery
- Moretti Fine Art

## **Shops and Showrooms**

- Haynes Hanson and Clark
- Scabal
- Stefano Ricci
- Wint & Kidd

### **Work Spaces**

- 1 Savile Row
- 12 Savile Row
- 148 Harley Street

## **Schools**

- Devonshire House School - Arkwright Rd.
- Devonshire House School - Fitzjohn's Av.
- Lyndhurst House School

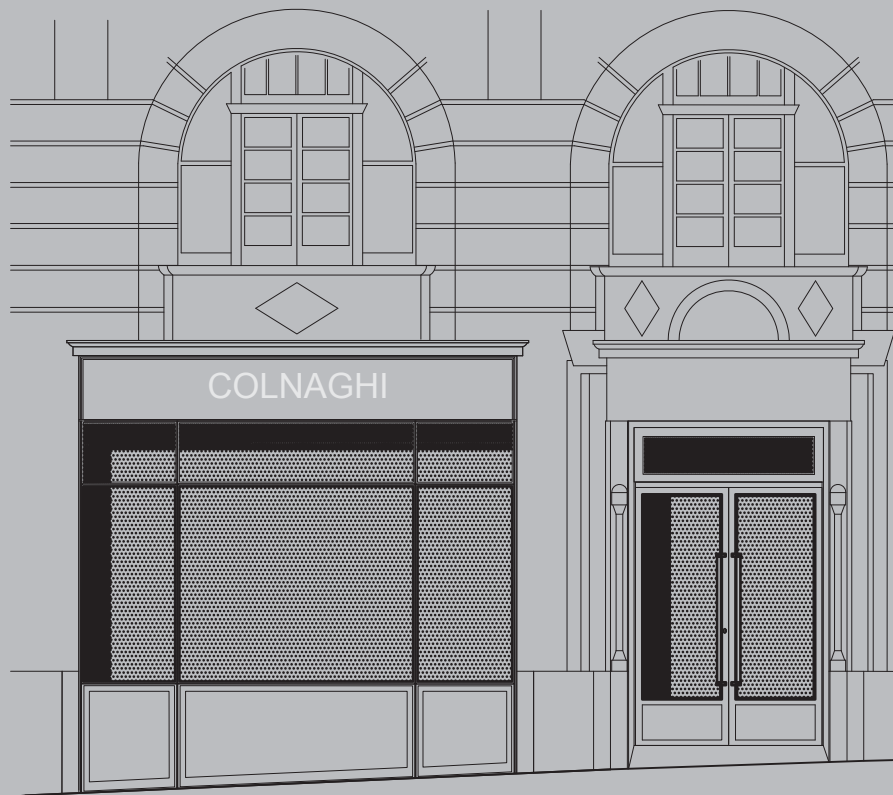
## **Architectural advisory services**

- Italian Embassy
- Italian Consulate
- Italian Cultural Institute



- Colnaghi Art Gallery  
St James's
- Dutko Galler  
Mayfair
- Kallos Gallery  
Mayfair
- Lampronti Art Gallery  
St James's
- Moretti Fine Art  
St James's





### Colnaghi - 26 Bury Street, London, SW1Y

P & D Colnaghi & Co is an art dealership in St James's, central London, England - the oldest commercial art gallery in the world, established in 1760.

In 2016 the gallery moved from the Mayfair location to the Crown Estate's re-development for Bury Street 29-30 St. James's Street & 25-27 Bury Street.

Far from being stuck in the past, the concept design of Diego Fortunato for this new gallery space is steeped in a number of eclectic references from historical and modern architecture to the world of haute couture, brought together in a playful game. A sequence of exhibition and working spaces invites the visitor onto a promenade articulated along axis and views, from an artwork to the next.

Year: 2016

- Concept Designer: Diego Fortunato - Architect  
(Riba Work Stages 1-6):

Galata Studio Architects

- Lighting Designer: ZNA Studio



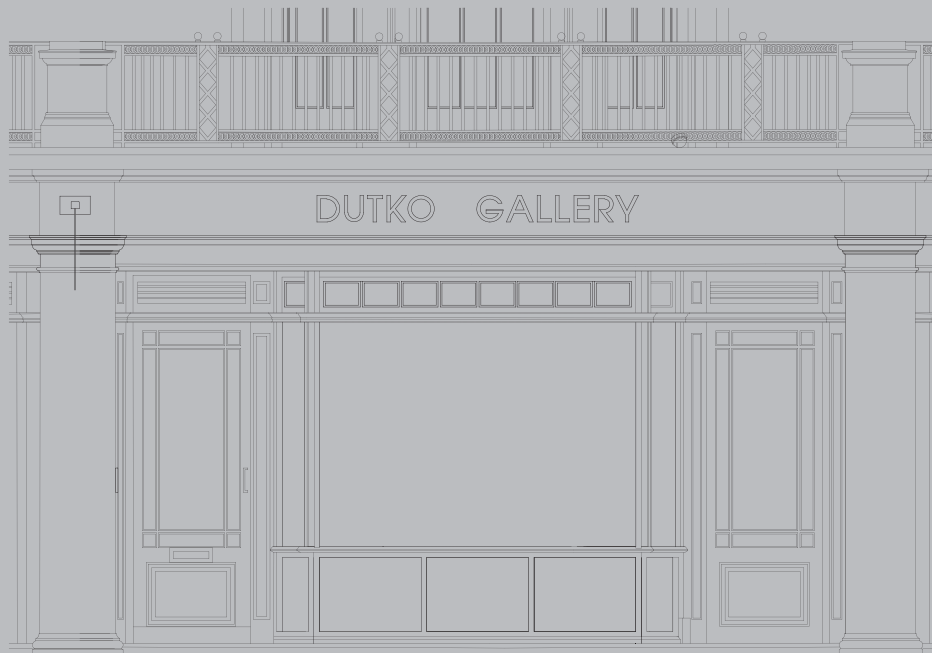












### Dutko Art Gallery

18 Davies Street, Mayfair, London

Founded by Jean-Jacques Dutko, a leading authority on the Art Deco movement, Galerie Dutko is a Paris based gallery renowned for staging exhibitions that showcase the finest examples of Art Deco furniture alongside contemporary works.

The design by the French designer Chantal Jaïs for the London space in Davies Street is based on clean lines and spaces, with carefully crafted minimalist detailing.

Year: 2015

- Concept Designer: Chantal Jaïs
- Architect ( Riba Stages 1-3): Galata Studio Architects
- Lighting Designer: Cannon-Brookes Lighting & Design
- Main Contractor: Intelitrade Developments







## Kallos Gallery

14-16 Davies Street, Mayfair, London

Kallos Gallery is an antiquities dealer located in Mayfair, London specialised in Greek Antiquities, founded by Baron Lorne Thyssen-Bornemisza in 2014.

The gallery has been designed around the art pieces and the idea of classical Mediterranean beauty which they embody – a new home instead of an aseptic museum space.

Year: 2014

- Concept Designer: Hervé Javet - Architect (Riba Stages 1-6):

Galata Studio Architects - Lighting Designer:

Cannon-Brookes Lighting & Design

- Main Contractor: Lamberti Construction













### Lampronti Art Gallery

44 Duke Street, St James's, London

Founded in Rome in 1914, the Cesare Lampronti Gallery represents the third generation of an established family of art dealers.

The gallery focuses on Italian Old Master Paintings of the 17th and 18th Centuries, with view paintings, landscapes and still lifes forming the majority of the content.

In January 2013, an offshoot of the gallery opened in the heart of London allowing viewers an insight into Italian art and culture.

The exhibition spaces have been designed and detailed to display the artwork within a classical environment.

Year: 2013

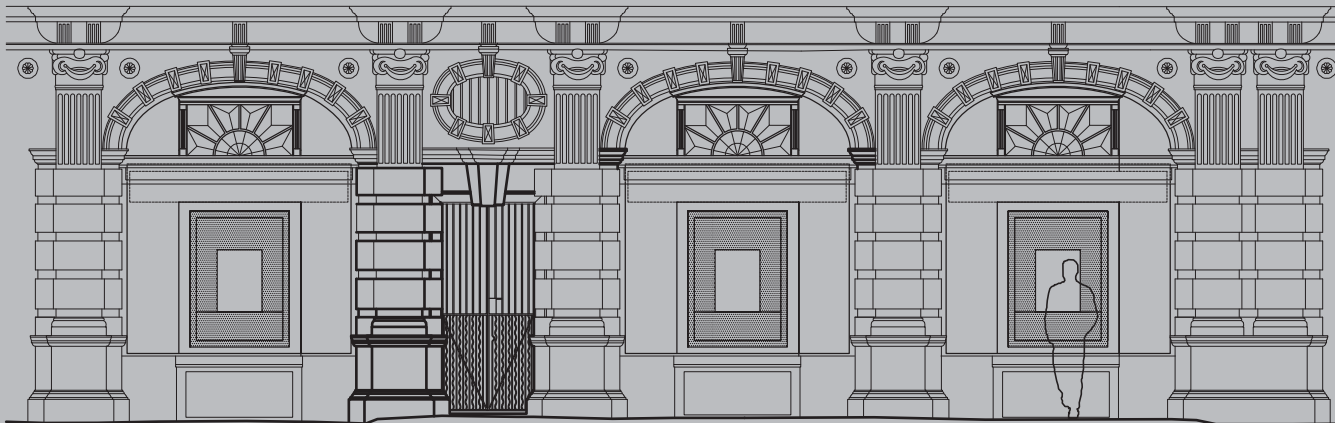
- Architect (Riba Works Stages 1-6): Galata Studio Architects
- Main Contractor: Lamberti Construction











## Moretti Fine Art Gallery

Moretti is an internationally known gallery specialising in Italian Old Master paintings with galleries in Florence, London and New York. The London gallery was opened in 2011 in Ryder Street at the heart of the London art district of Saint James's.

The internal layout and detailing has been developed around an ideal of comfortable minimalism, characterised by a strong palette of colours and high quality natural materials. The window display is based on specially designed movable screens with a front display boxes and rear display panels.

Year: 2014

- Architect (Riba Works Stages 1-6): Galata Studio Architects
- Main Contractor: HannMade Construction















- Haynes Hanson and Clark  
Chelsea
- Scabal  
Mayfair
- Stefano Ricci  
Mayfair
- Wint & Kidd  
Notting Hill and Royal Echange



**Haynes Hanson & Clark - Wine Merchant**  
7 Elystan St, Chelsea, London

Haynes Hanson & Clark is an independent wine merchants specialising in wines sourced directly from growers. The London shop is in Elystan Street, a fashionable street in Chelsea characterised by high quality food shops and restaurants.

The layout of the shop has been designed as a sequence of areas and display layers: the new shopfront, the retail area, the counter and behind counter display, the office area.

Materials, lighting, storage and display have been selected to show the wide variety of wines in the most effective way.

Year: 2008

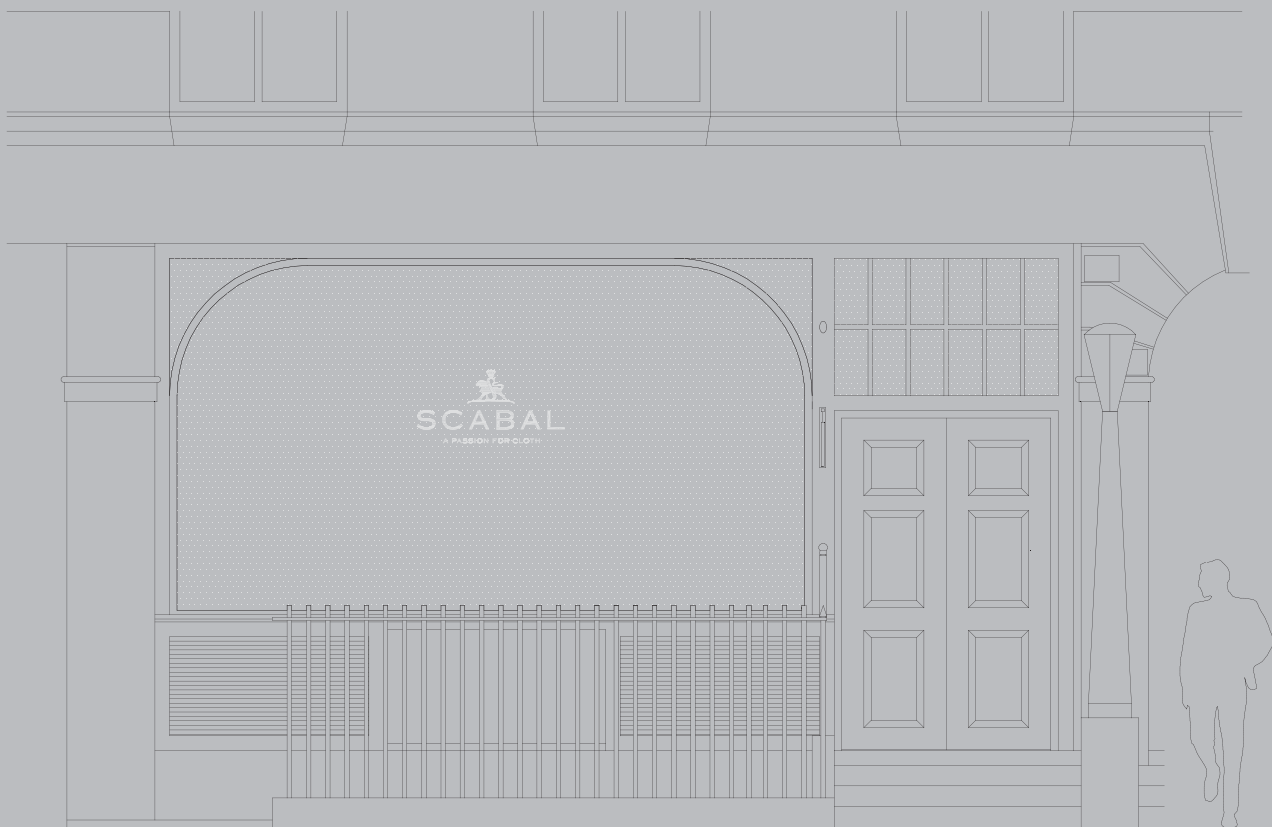
- Architect (Riba Work Stages 1-6): Crawford and Gray Architects











## Scabal

12 Savile Row, Mayfair, London

Scabal – the famous and long established Belgian textile company – is an important reference point in Savile Row. In 2014 Scabal decided to fully renovate their premises to re-launch their presence in Savile Row and offer an ever better selection of tailoring services and retail of fabrics for tailors and the textile business.

Crawford and Gray collaborated with the company in-house designer to develop the project and manage it to the successful completion of the works. The design, the careful selection of high quality materials and the detail of the new interiors enhance some of the finest tailoring fabrics in the world.

Year: 2013

- Designer: Scabal

- Architect (RIBA Work Stages 1-6):

Crawford and Gray Architects

















## Stefano Ricci

56 South Audley Street, Mayfair, London

Since 1972, Stefano Ricci has been a reference point for true Luxury Menswear & Lifestyle. Known for its 100% Made in Italy craftsmanship, the Florentine maison offers the highest quality in made-to-measure Italian tailoring and the SR HOME Collection and Bespoke Interiors.

Galata Studio collaborated with the company in-house designer to develop the project and manage it to the successful completion of the works.

The design of the showroom stems from the overall design approach of Stefano Ricci: pure lines, precious materials and timeless design led by the search for excellence.

Year: 2016

- Designer: Stefano Ricci
- Architect (Riba Work Stages 1-6): Galata Studio Architects











**Wint & Kidd - Jewelry and Diamonds Shop**  
238 Westbourne Grove, Notting Hill, London

Wint & Kidd is the brainchild of diamond dealer Luke Marriott and retailer James Knight, offering the choice of an original design with white and natural coloured diamonds crafted into handmade pieces by contemporary designers.

The projects were developed around the concept design by the fashion designer Matthew Williamson for the main showroom in Westbourne, followed then by a second store in the prestigious setting of the Royal Exchange – a Grade I listed building.

The wide selection of materials, finishes and colour build bold and eclectic interiors. A luxurious atmosphere to complement the unique experience of shopping for rare diamonds.

Year: 2002

- Concept designer: Matthew Williamson -  
Architect (RIBA Work Stages 1-6):

Crawford and Gray Architects - Main Contractor:  
Purple PCL





## Wint & Kidd - Jewelry and Diamonds Shop Royal Exchange, City of London

Wint & Kidd is the brainchild of diamond dealer Luke Marriott and retailer James Knight, offering the choice of an original design with white and natural coloured diamonds crafted into handmade pieces by contemporary designers.

The projects were developed around the concept design by the fashion designer Matthew Williamson for the main showroom in Westbourne, followed then by a second store in the prestigious setting of the Royal Exchange – a Grade I listed building.

The wide selection of materials, finishes and colour build bold and eclectic interiors. A luxurious atmosphere to complement the unique experience of shopping for rare diamonds.

Year: 2005

- Concept designer: Matthew Williamson -  
Architect (RIBA Work Stages 1-6):

Crawford and Gray Architects - Main Contractor:  
Purple PCL









- 1 Savile Row  
Mayfair
- 12 Savile Row  
Mayfair
- 148 Harley Street  
Marylebone



## Clinics and Consulting Rooms

148 Harley Street, Marylebone, London

The project was developed in accordance with the client's brief for modern medical rooms in a traditional setting. This involved the restoration of the listed building, additional consulting rooms in an existing mews building and improving accessibility for patients with disabilities.

Restoration included the Georgian timber structure, plaster mouldings, original brickwork, railings and woodwork. New services were added including a medical lift, air conditioning and flexible systems for electricity and communication to all the consulting rooms.

The project was developed in close discussion with The Crown Estate, owner of the freehold of the building who provided a strict schedule of repairs. The decoration was designed with the client's intended use of the house in mind. Neutral and calming colours were chosen for the consulting rooms, while the entrance hall and the communal areas were decorated in different shades of more vibrant colours.

Year: 2012

- Project Manager: Davis Brown
- Architect (RIBA Work Stages 1-6): Crawford and Gray Architects
- Main Contractor: Firmco









## 1 Savile Row - Offices

This complex project involved working with Gieves & Hawkes for a complete refurbishment of offices above their occupied and busy shop in this prestigious location at 1 Savile Row. A grade II listed building, it was the headquarters of the Royal Geographical Society up until 1912, when was bought by the tailors Hawkes & Co. in part because the firm had dressed so many explorers.

Following a complete strip out of all floors, a roof mansard extension and side extension were constructed above the main building on Savile Row and the old Royal Geographical Society map room facing Vigo Street – retaining the existing antique glass roof in its entirety and increasing the office space available to over 10,000 sq.ft.

Externally the building was sympathetically renovated, decorated with feature lights and a dedicated entrance added on Vigo Street.

Year: 2013

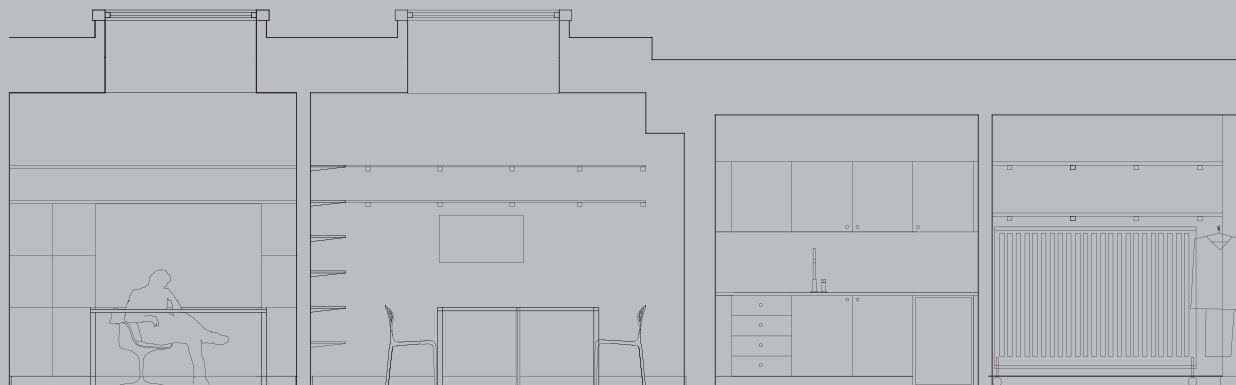
- Project Manager: Davis Brown
- Architect (Riba Work Stages 1-6): Crawford and Gray Architects
- Main Contractor: Firmco











### Scabal - Offices and tailoring facilities 12 Savile Row, Mayfair, London

Scabal – the famous and long established Belgian textile company – is an important reference point in Savile Row. In 2014 Scabal decided to fully renovate their premises, offices and tailoring facilities

Crawford and Gray collaborated with the company in-house designer to develop the tailoring facilities and the offices for wholesale of fabrics to other tailors.

Year: 2013

- Designer: Scabal

- Architect (RIBA Work Stages 1-6):

Crawford and Gray Architects





- Devonshire House School- Arkwright Rd  
Hampstead
- Devonshire House School- Fitzjohn's Av.  
Hampstead
- Lyndhurst House School- Lyndhurst Grdns  
Hampstead



## Devonshire House School

2-4 Arkwright Road

Devonshire House preparatory school is a co-educational independent day school for children from 2½ to 13. The School occupies four large Victorian houses in Arkwright Road and Fitzjohn's Avenue, Hampstead.

Crawford and Gray designed and detailed a new Information and communications technology (ICT) suite by extending the School hall, located at the rear of school site on Arkwright Road.

The works carried out entailed strengthen the existing structure of the hall and erect the extension using off-site construction methods to fit a very tight programme within the 8 weeks school's summer break.

Due to the restricted access, the insulated timber panels forming the walls and the curved roof had to be craned above the main school buildings and carefully moved into position.

As part of the project, an extensive green roof was installed onto the existing halls roof and green walls onto the two end walls of the new building.

Year: 2013

- Architect (Riba Work Stages 1-6): Crawford and Gray Architects
- Main Contractor: Richardson and Peat
- Specialist Fitout Contractor: Confetti Constellations











## Devonshire House School

69 Fitzjohn's Avenue

Devonshire House preparatory school is a co-educational independent day school for children from 2½ to 11 for girls and to 13 for boys. The School occupies four large Victorian houses in Arkwright Road and Fitzjohn's Avenue, Hampstead.

Crawford and Gray design a substantial alteration and extension project to the ground and the lower ground floor of the school building at Fitzjohn's Avenue to improve some of the existing school facilities, the connectivity and circulation with the basement level and the rear garden, the appearance of the building at the rear and its overall energy performance.

The works include internal space re- planning at ground and basement level, removal of the rear single storey extension and replacement with a single storey extension and open loggia, extension to the existing basement, opening up below the rear terrace elevation onto garden level, increase the existing lightwells

Year: 2015-16

- Architect (Riba Work Stages 1-3):

Crawford and Gray Architects







## Lyndhurst House School Lyndhurst Gardens

The Lyndhurst House School preparatory school is a co-educational independent day school for children and boys up to thirteen, set within a Grade II Listed Building.

Dating back to the last quarter of 19th Century, the double-fronted, detached building was designed by the architect Harry Measures, with rich detailing both on the interior and the exterior.

Crawford and Gray designed and detailed the alteration works and extension works at lower ground floor levels and loft level to provide additional teaching spaces and better facilities.

Year: 2015-16  
- Architect (Riba Work Stages 1-3): Crawford and Gray Architects



- Italian Embassy  
Grosvenor Square
- Italian Consulate  
Farringdon Street
- Italian Cultural Institute  
Belgrave Square



**Italian Embassy**  
Grosvenor Square, London

The Embassy - which has its entrance from the private cul-de-sac of Three Kings Yard - is joined through a courtyard to the Residence of the Italian Ambassador on Grosvenor Square.

The Embassy and the Residence form a compound with administrative, entertainment, residential functions.

Galata Studio was appointed to provide architectural and project coordination services in connection with the large development at 1-3 Grosvenor Square by the new owner of the site and invited to advise on upgrading and refurbishment works.





**Italian Consulate General**  
83-86 Farringdon Street, London

The Italian Consulate General was relocated in 2013 at Harp House – a modern eight storey high building in the City of London.

Galata Studio was involved with the rights of light negotiations in connection with a nearby development and the project for the installation of state of the art solar panels - as part of the Italian Foreign Ministry's green strategy to reduce the carbon footprint of the diplomatic network.



### The Italian Cultural Institute

The Italian Cultural Institute in London is located at 39 Belgrave Square, in the heart of Belgravia. The Institute promotes Italian culture, organizing events at its own premises and supporting other relevant activities elsewhere.

Crawford and Gray was involved in a restoration project to satisfy The Crown Estate - owner of the freehold of the building - and their schedule of repairs for the front elevation and the roofs.



## CRAWFORD & GRAY ARCHITECTS Ltd.

7 Marylebone Lane, London, W1U 1DB +44 (0) 20 7221 5966

[info@crawfordandgray.co.uk](mailto:info@crawfordandgray.co.uk) | [www.crawfordandgray.co.uk](http://www.crawfordandgray.co.uk)

RIBA   
Chartered Practice

ISO 9001:2015  
CERTIFIED