



# CRAWFORD & GRAY ARCHITECTS

## RESIDENTIAL - COUNTRY





- Introduction

*Featured projects:*

- House in Berkshire
  - House in Berkshire II
  - House in Fuerteventura, Spain
  - House in Oxfordshire
  - House in the Surrey Hills
- Projects location map



## Introduction

Crawford and Gray Architects was founded by Peter Crawford and Michael Gray in 1996. Enrico Galliani, who joined CGA in 2000, is the practice's director and lead architect since 21013. Galata Studio merged with CGA in 2017 to bring together the expertise of the two architectural practices.

Specialised in high profile projects, the CGA's portfolio covers a wide range of residential projects outside town, from fully new built house to sensitive restorations of historic buildings.

Understanding the client's aims and expectations, developing specific designs and offering a solid project management, satisfy the requirements of local authorities, landlords and relevant stakeholders, are all at the core of CGA's architectural approach.

Acting as both architect and lead consultant CGA offers a very extensive package across the RIBA work stages: Preparation and Brief, Concept Design, Developed Design, Technical Design, Construction, Handover and Close Out.



EAST ELEVATION

## House in Berkshire

Clients, for whom we had extended their Grade II London house, bought a simple converted telephone exchange on a stunning site located in the Berkshire countryside.

The long, garden elevation faces South and we emphasised this with a sequence of ground floor rooms and bedrooms on the upper floor. The master bedroom suite faces South unveiling a landscape view across woodlands, it also boasts a terrace which faces East allowing the clients to enjoy the rising sun.





























## House in Berkshire II

As often happens we had fully refurbished the client's London house and they then asked us to extend and refurbish a wonderful house for them in the country.

The house was opened up with resplendent views across the grounds which acted as a backdrop to the country style interior.













## House in Fuerteventura, Spain

Built on north of the Island of Fuerteventura, close to a natural park near to the sea, the house is inspired by the Moroccan riads and the courtyard houses of the ancient Greek and Roman cities. Exterior and exterior spaces are interlocked and the privacy of the domestic space is well protected. Places to congregate are juxtaposed with others to relax.

As the island is famous for the wind condition, a number of places are sheltered when the wind is too strong and others are exposed when the wind is welcome on hot sunny days. Throughout the day light and shadows move in and around the house – so are the people living in it, looking for their perfect spot at each moment in time.













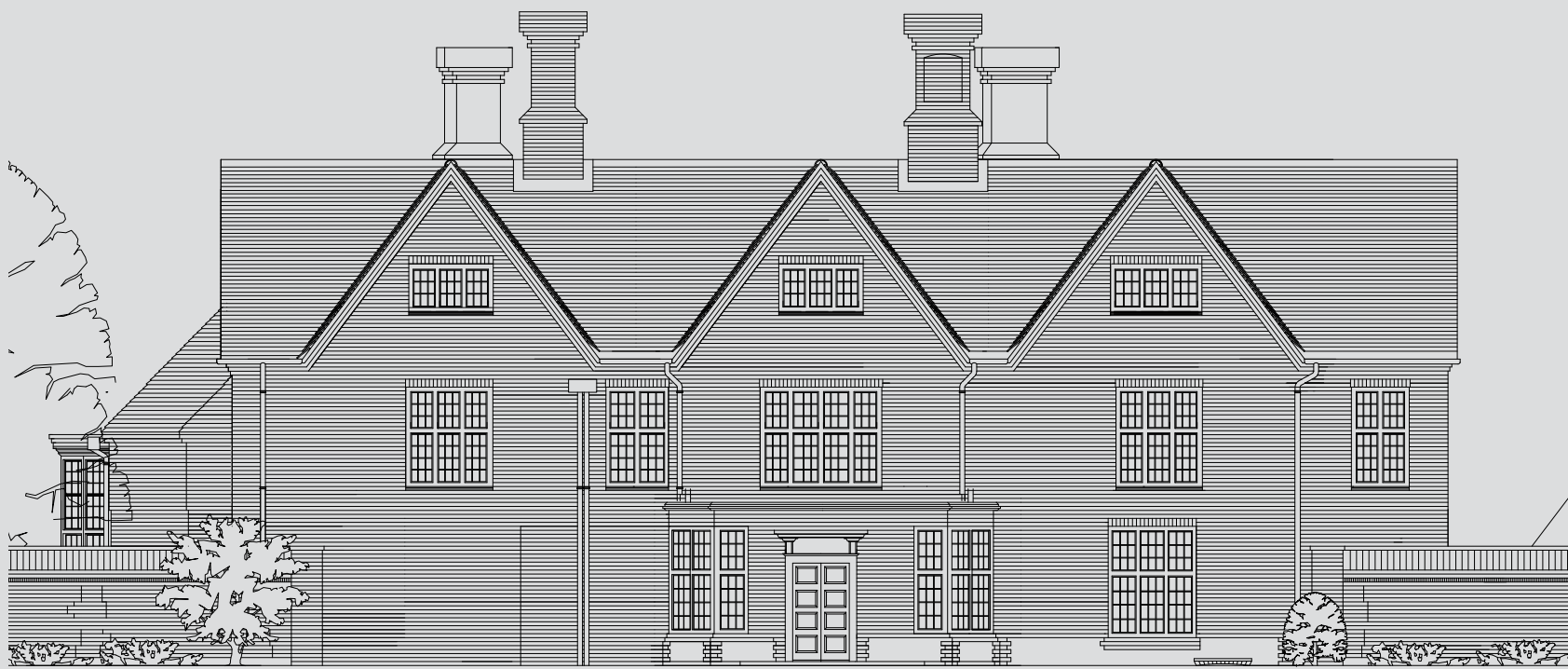












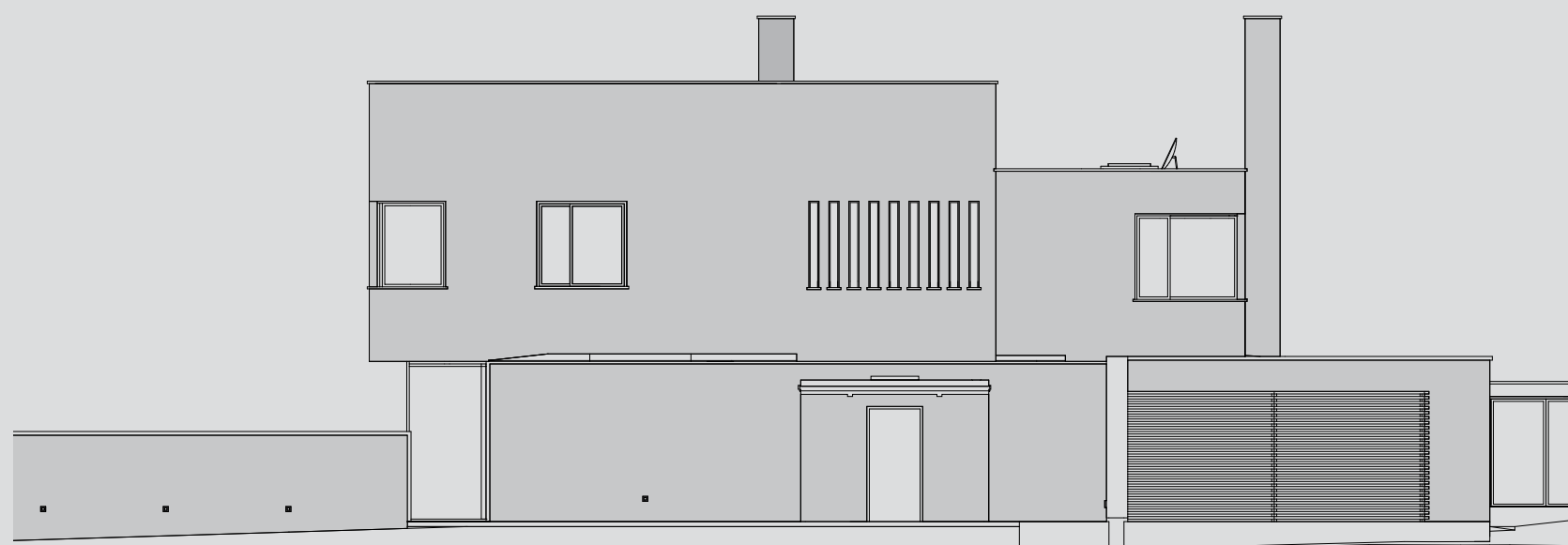
## House in Oxfordshire

Located in Oxfordshire, this Grade II Listed Jacobian estate was sympathetically renovated to restore all the period features such as the grand fireplaces and create a coherent layout to maximise the existing space both vertically by introducing large double height oak framed living spaces and horizontally by opening up smaller less used areas.









East Elevation

## House in Surrey Hills

A detached residential property which is near Guildford in the Surrey Hills. The dwelling is set within its own grounds, including extensive gardens, with a tennis court positioned to the north and a collection of outbuildings located to the north east of the dwelling.

The new house – which replaced a previous house dating from the 1930s on the grounds - is arranged on two floors. It is based on a square plan, with rooms on each floor arranged around a central top-lit stairwell.

The building is flat-roofed, with areas of roof at different levels, and two substantial chimney stacks rising over the main roof levels.































# CRAWFORD & GRAY ARCHITECTS Ltd.

7 Marylebone Lane, London, W1U 1DB +44 (0) 20 7221 5966

info@crawfordandgray.co.uk | www.crawfordandgray.co.uk

**RIBA**   
Chartered Practice

**ISO 9001:2015**  
CERTIFICATION